

The Overlook Miniguide

by Randal Jett and Matt Samet

The following guide is reproduced with permission from the authors. The text and photos are from Matt and Randal's excellent but out of print "Sport Climbing in New Mexico".

Warning: Rock climbing is a potentially dangerous sport. The author's opinions regarding the following climbs are intended to serve only as guidelines. It is the responsibility of each user of this guide to determine when our suggestions should be disregarded in favor of a more suitable approach. Helmets are advised. You are responsible for your own actions.

Some climbs in this guide may be equipped with cold shut anchors. These anchors are intended for lowering after a lead only. **DO NOT BELAY ON OR TOP-OUT OVER OPEN COLD SHUT ANCHORS.** Serious injury or death may occur if this warning is ignored.

Crag Description: The "Overlook" is a 65 foot (mostly south-facing) basalt cliff with over 65 sport and traditional routes. This area is White Rock's premier sport climbing and top roping crag (routes on the Overlook's popular south side have had top roping bolts installed that can be reached from the rim). The area is climbable year-round, due to the varied aspect of the cliff. Most people come to the Overlook to sport climb; though many worthy cracks exist, they are not on par with those of many other crags in the vicinity.

Getting There: To get to the "Overlook," turn off NM 4 onto Rover, make an immediate left onto Meadow Lane. Turn at the sign on Meadow Lane that announces "Overlook Park." Follow this road due east until you get to its end. Park here, and walk straight out. Just before you get to the Rio Grande "Overlook", turn left (north), and walk to the end of a narrow ridge of rock. Climb down to the next level, which is the top rope anchor level. Due north is the sport climbing area, and due east is the more traditional (crack and bolted) top roping area. The Overlook top ropes are all set with bolts. It is not always obvious that people are below...be careful! Get to the cliff base by following a distinct trail on the south end of the main cliff.

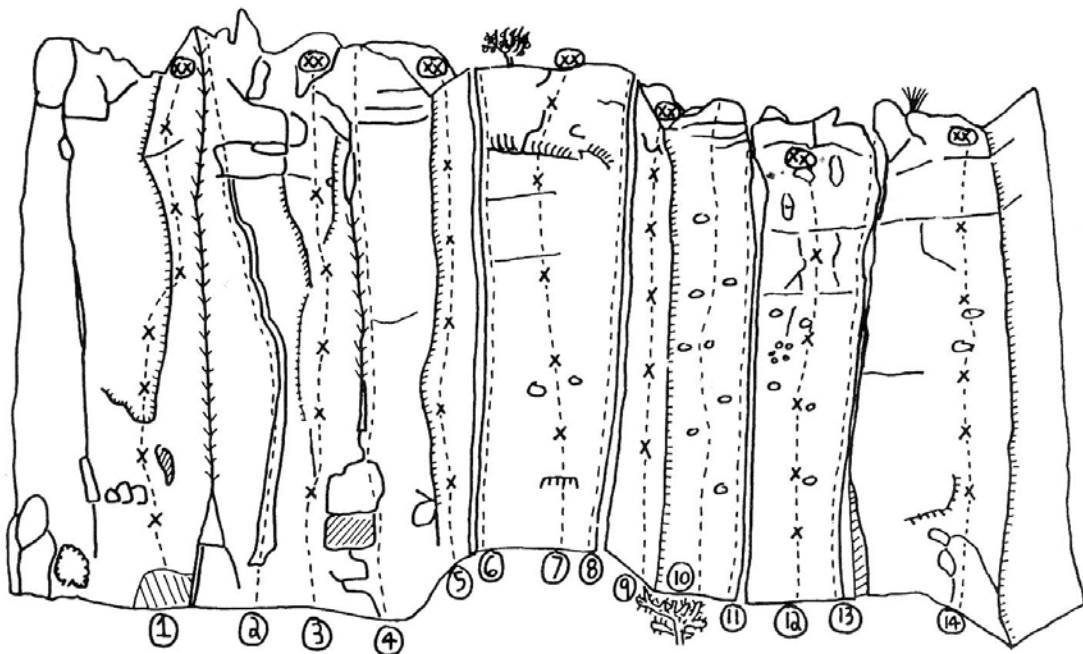


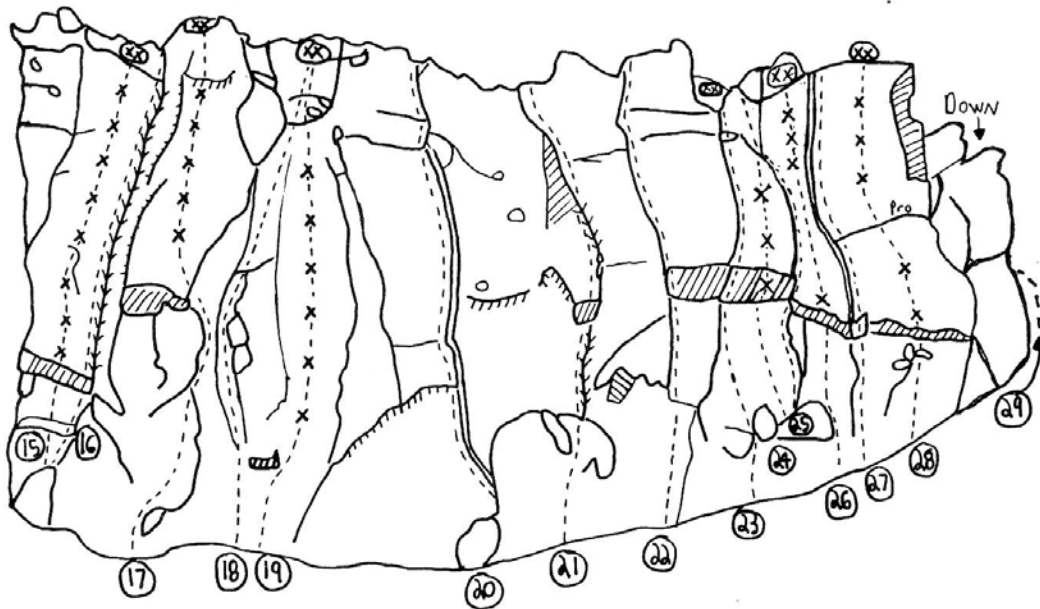
White Rock Area Map

Routes are listed from left to right as you view the crag from the base.

- * 1 Bosker Boozeroo 11a**
A seven bolt overhanging arete to a two bolt anchor.
FA: Cameron Burns, Paul Fehlau
- 2 Squeeze Chimney 10+**
Squeeze it you hose-bag!
- * 3 Boy, What Assholes (You Guy's Turned Out To Be) 10b**
A rounded face/arete with five bolts to a two bolt anchor.
FA: Mike Schillaci, Per Nordlandr, Burns, Fehlau, Peter Graham, Francois Beguin, Tim Rutherford, and your mother
- 4 5.8 Crack**
- ** 5 Paul's Boutique 11b**
A five bolt arete to a two bolt anchor.
FA: Burns, Schillaci
- 6 Headwall Crack Left 5.8**
- ** 7 No Exit 12a**
A five bolt face with a challenging bulge at the top.
FA: Chris Vandiver, Lee Sheftel, Rick Smith

- 8 Headwall Crack Right 5.9**
- **9 Double Vision / Ream Dream 11c/10d**
 A five bolt face to a two bolt anchor. Using the arete on the right makes this climb 10d.
 FA: Smith, Sheftel, Vandiver
- ***10 Cholla Wall 5.9+/10a**
 Do not bolt this route. Either top rope it or lead it with small SLCD's. Classic.
- **11 The Cholla Crack 5.9**
 A classic hand/fist crack.
- **12 Holy Wall 10a**
 A five bolt pocketed face to a two bolt chain anchor. An excellent warm-up.
 FA: Burns, Fehlau
- 13 Holy Crack 5.9+**
 A steep finger crack.
- **14 Dave's Face (aka Sale At Mervyn's) 10c**
 A technical face with five bolts and a chain anchor.
 FA: Burns, Schillaci, Fehleu





****15 Way Beyond Zebra 11b**

A heartily protected eight bolt face. Harder if you top out past the chain anchor. Whoever sold Burns a Bosch should be disemboweled!

FA: Burns, Steve Provonost, Mike Makely

***16 Polly's Crack 5.8**

A classic 5.8 finger crack and stemming problem.

FA: Polly

***17 Thief In Time 12d**

Either start in Polly's Crack or the dihedral system 10 feet right to reach a ledge beneath a radically steep face. Crank past five bolts and hard moves to a double cold shut anchor. The 12d rating assumes that any holds left of the left hand arete are "off limits", but you are allowed to pinch the arete itself. This route is more like 12b/c if you follow the natural line.

FA: Vandiver, Sheftel

- 18 Unknown 11a TR**
- ***19 Face Off 12a**
The best route of it's grade at the Overlook. Climb a bulging face past six bolts to a double bolt anchor.
FA: Sheftel, Vandiver, Smith
- 20 M.C. Epic 5.8**
A classic 5.8 fist crack.
- 21 Captain Smarmbag 5.10**
Climb the chossy, flared dihedral.
- *22 Box Overhang Left 5.8+**
Fun underclinging and jamming leads you out the left side of the big roof.
- **23 Len's Roof 11a**
Jam the crack out the center of the roof.
FA: Len
- 24 Overture 12b/c**
A contrived slag-pile. Climb three bolts out the right side of the roof, but don't grab the cracks to the left or right. Ultra-lame.
FA: Vandiver, Smith, Sheftel
- *25 Box Overhang Right 5.8**
Jam the crack out the right side of the roof.
- 26 On Beyond Zebra 12b R**
Clip a silly bolt down low, then do a premeditated, contrived runout on 5.8 (don't reach over to your right and protect the obvious crack, snookums). Then crank past three bolts that are two feet apart on silly and stupid moves to a double cold shut anchor.
FA: Peter Gram
- 27 5.9 Crack**
Climb the large Marge crack. Don't wedge your wankee!
- ***28 Thorazine Dream 11d**
A two bolt slab leads to a horizontal with a key TCU placement. Crank past three more bolts to double cold shuts. Amazing!!
FA: Tom MacFarlane, Brian Riepe

Note: A stimulating down climb can be found in the **Toilet Bowl**, the fourth class chimney system immediately north of Thorazine Dream on the prow of the Overlook. Don't get flushed!

THE OVERLOOK (NORTH FACE)

At Thorazine Dream, simply turn the corner and find View With A Room on the north face of **The Overlook**.

***29 View With A Room 11b**

A short three bolt face to a two bolt anchor.

FA: John Foley, Craig Copelin

30 Overloord 11a

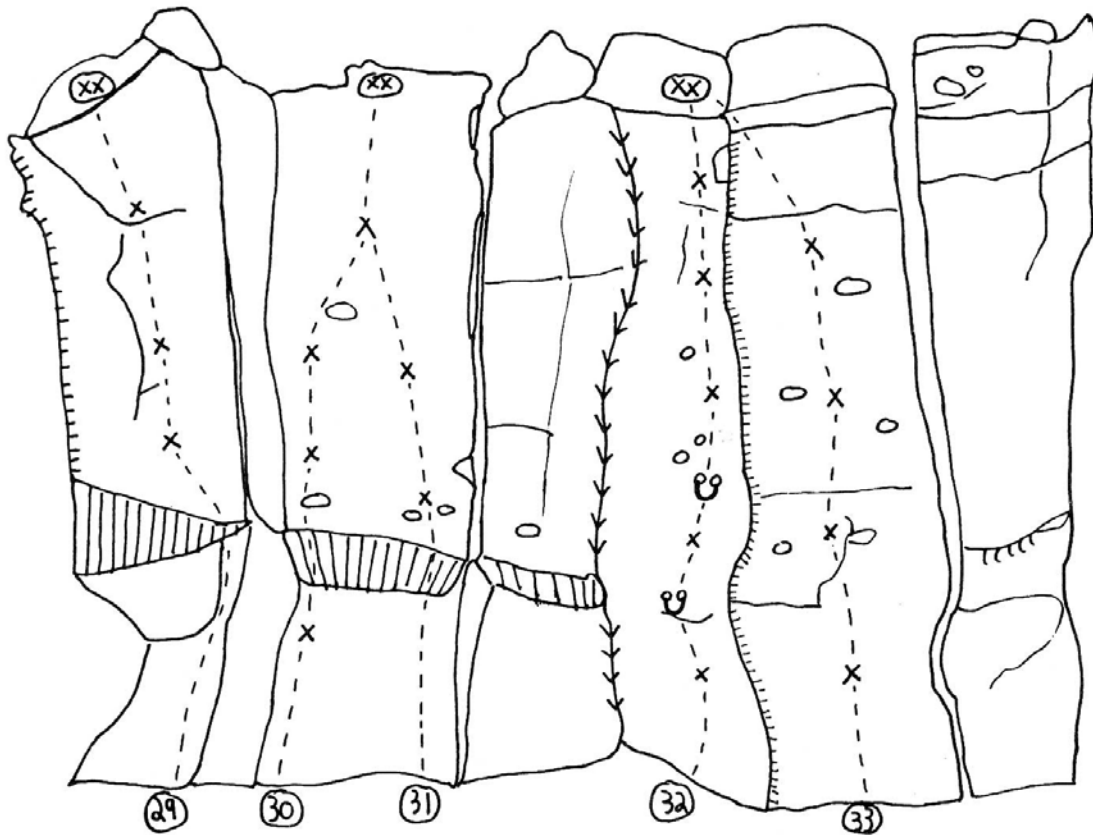
A four bolt arete to chains.

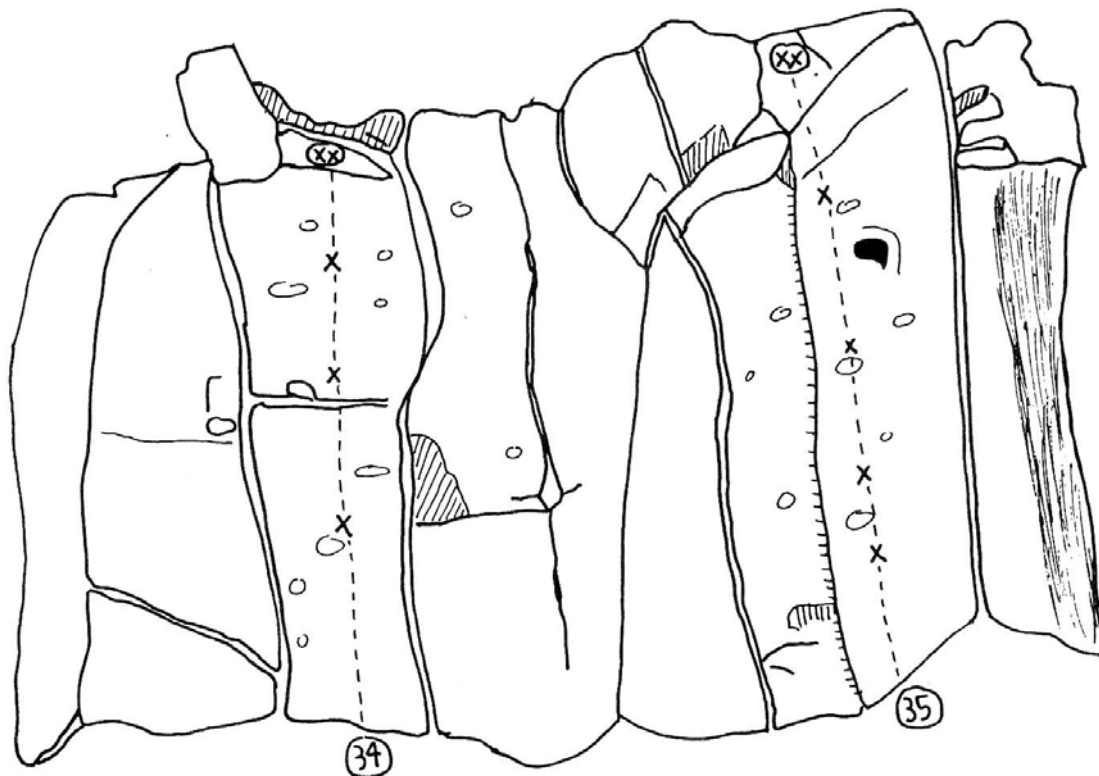
FA: Foley, Copelin, Brian Wirtz

***31 Overlard 10c**

A three bolt face with big pockets. Shares it's last bolt and anchor with Overloord.

FA: Wirtz, Foley, Copelin





****32 Overripe Fresh-Squeezed California Females 11b**

Four bolts and two fixed slings carry you up an arete to a chain anchor.

FA: Cameron "please slander me" Burns, Fehlau

***33 The D'Antonio Approach 12a**

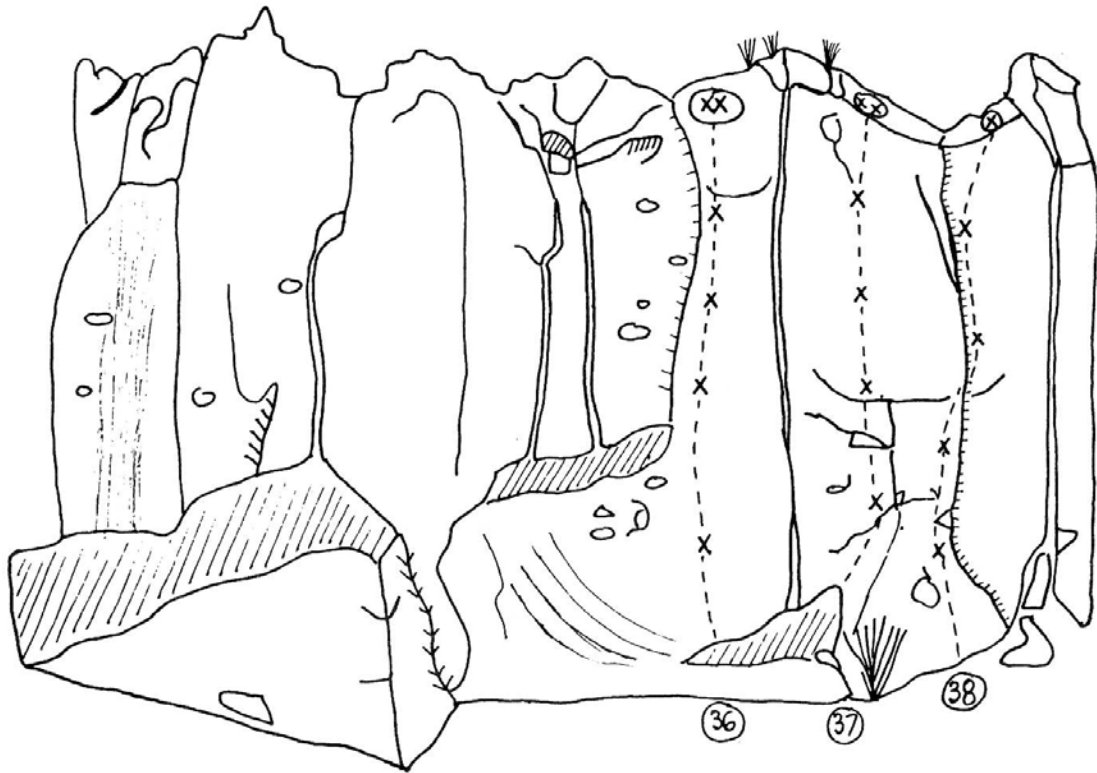
A contrived boulder problem start past a bolt (crack on right is off limits) leads to a three bolt face with big pockets. Same anchors as for Overripe....

FA: Bob D'Antonio, Mike McGill

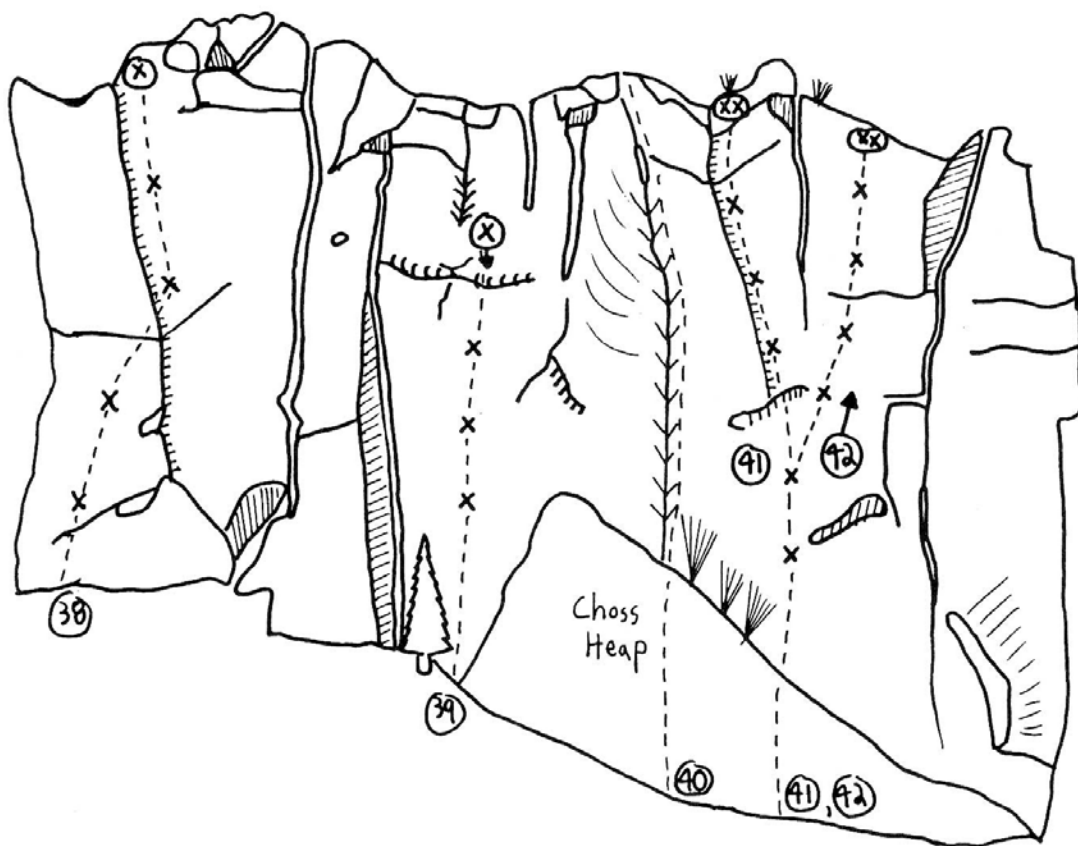
****34 Huecos Rancheros 10c**

A steep three bolt face to a double bolt anchor.

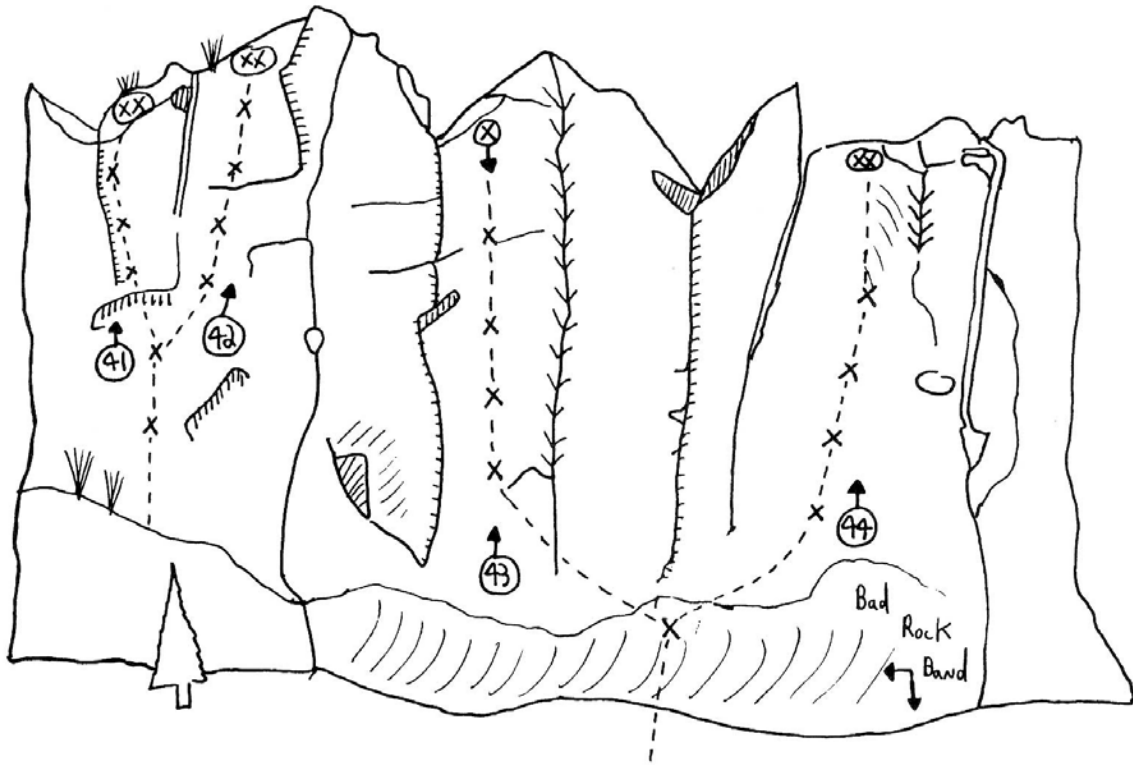
FA: Smith, Sheftel



- **35 Just Say No To Jugs 11a**
 An overhanging wall with big pockets and four bolts. Double bolt anchor.
 FA: Smith, Sheftel
- *36 Overlichen 11a**
 A four bolt face/arete to a double bolt anchor.
 FA: Clark Mann, Bob Steuwe
- *37 Chocolate Thunder 11d**
 A black streaked arete with four bolts and an anchor.
 FA: D'Antonio, Burns



- *38 **Hammertime 12a**
A four bolt arete with a one bolt anchor.
FA: D'Antonio, McGill
- *39 **Citizen Of Time 11d/12a**
A four bolt face with no anchor. Lichenous.
FA: D'Antonio, Patrick French
- **40 **Crisis In Utopia 11a/b**
A clean finger crack up an open book.
FA: Gram, Suzie Murphy
- **41 **Primal Scream 12a**
Clip the first two bolts of Overkill then move left to a striking three bolt arete. Double bolt anchor.
FA: D'Antonio, McGill



***42 Overkill 11a**

A steep face with six bolts and hidden jugs to a chain anchor.

FA: D'Antonio, Burns

43 Lubme 12a/b

Clip a bolt low in poor rock then traverse left to a five bolt face and a one bolt anchor.

FA: D'Antonio, Burns

44 Putterman Gully Jump 5.9+

Clip the first bolt of Lubme then move right to a sleazy four bolt face with a chain anchor. Northern New Mexico's worst route.

FA: D'Antonio, Burns